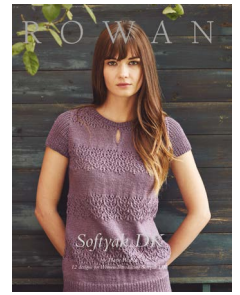




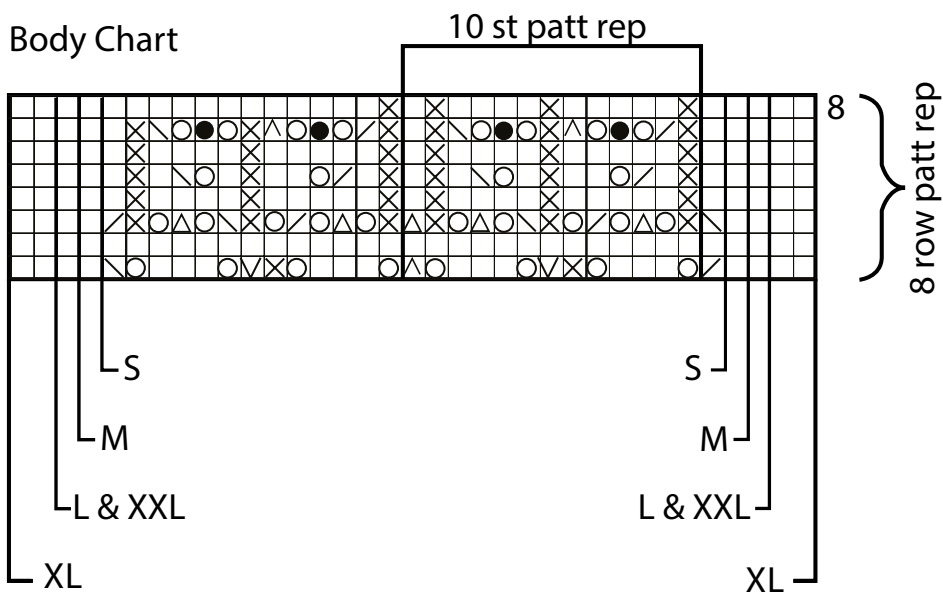
ADDENDUM

JUMO

SOFTYAK DK



Body Chart



Key

- K on RS, P on WS
- No stitch
- K1 tbl
- yfwd
- K2tog
- Sl 1, K1, pssso
- Sl 1, K2tog, pssso
- Sl 2, K1, p2sso
- inc 1 st (by K into front and back of st)



Unfortunately a pattern error has occurred, we apologise for any inconvenience that this may have caused

www.knitrowan.com

+44 (0) 01484 681881